



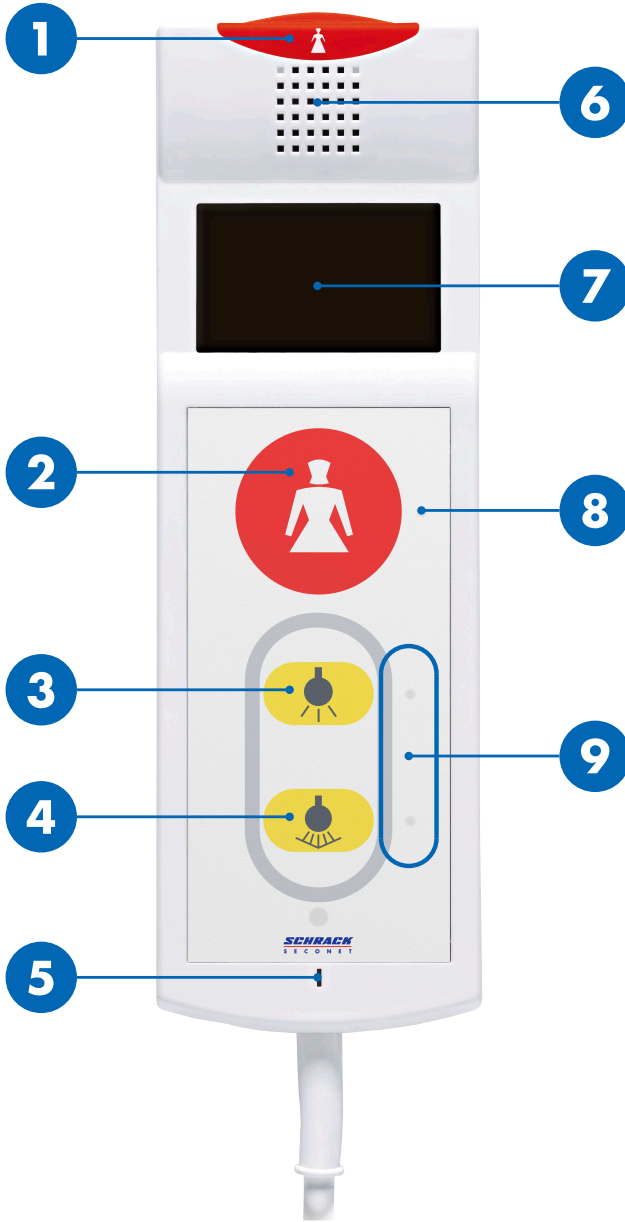
Patient terminal PAT-L

User manual

HEALTH CARE

SCHRACK
S E C O N E T

Overview



1 / 2	Call buttons
3	Room light
4	Reading light
5	Microphone
6	Loudspeaker
7	Display
8	LED of call button (reassurance light)
9	LED of light button (finder light)




CAUTION

Do not use as rising aid

Cable and device are no rising aid. Do not pull yourself up using the device.

Care staff call

The call button  **1** and the LED **8** are constantly lit, so that the buttons are easier to locate even in the dark.

Call care staff

Press call button  **1** or **2**.

► Call button  **1** and LED **8** light up.


Care staff answers

1. Gong sounds over loudspeaker **6** and call button/LED flashes.
2. Use the patient terminal like a telephone for the talk with the care staff.
3. The care staff ends the call at the end of the talk.

Turn light on and off

The LED of the light buttons **9** are constantly lit, so that the buttons are easier to locate even in the dark.

Room light (optional)

Press the room light button  **3** briefly.

► Room light is turned on or off.

Reading light (optional)

Press the reading light button  **4** briefly.

► Reading light is turned on or off.



SCHRACK SECONET AG

Eibesbrunnnergasse 18

A-1120 Vienna

Tel. +43 1 81157

office@schrack-seconet.com

www.schrack-seconet.com

EN

HEALTH CARE

SCHRACK
SECONET