



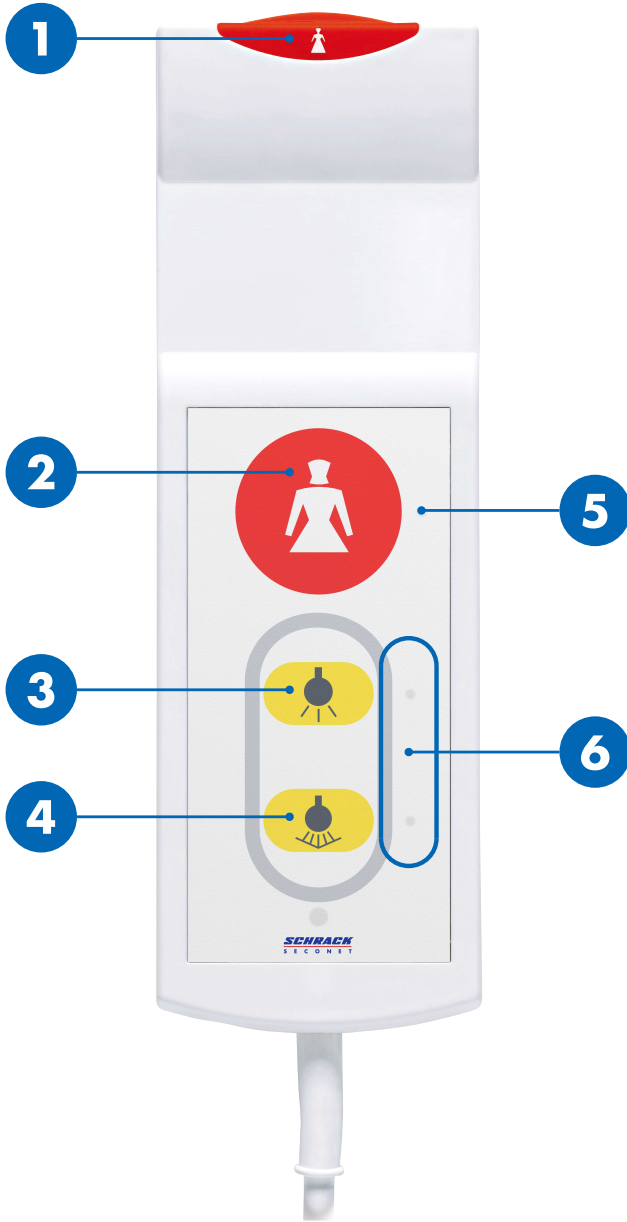
# Pear pushbutton BT-IP

## User manual

HEALTH CARE

**SCHRACK**  
S E C O N E T

# Overview



<b>1 / 2</b>	<b>Call buttons</b>
<b>3</b>	<b>Room light</b>
<b>4</b>	<b>Reading light</b>
<b>5</b>	<b>LED of call button (reassurance light)</b>
<b>6</b>	<b>LED of light button (finder light)</b>




### **CAUTION**

#### **Do not use as rising aid**

Cable and device are no rising aid. Do not pull yourself up using the device.

## **Care staff call**

The call button  **1** and the LED **5** are constantly lit, so that the buttons are easier to locate even in the dark.

### **Call care staff**

Press call button  **1** or **2**.

- ▶ Call button  **1** and LED **5** light up.

## **Turn light on and off**

The LED of the light buttons **6** are constantly lit, so that the buttons are easier to locate even in the dark.

### **Room light (optional)**

Press the room light button  **3** briefly.

- ▶ Room light is turned on or off.

### **Reading light (optional)**

Press the reading light button  **4** briefly.

- ▶ Reading light is turned on or off.



SCHRACK SECONET AG  
Eibesbrunnnergasse 18  
A-1120 Vienna  
Tel. +43 1 81157  
[office@schrack-seconet.com](mailto:office@schrack-seconet.com)  
[www.schrack-seconet.com](http://www.schrack-seconet.com)

EN

HEALTH CARE

**SCHRACK**  
SECONET